



8 a.m. - 5 p.m. Sales Available  
International: 1-919-443-0207  
Toll Free: 1-888-551-3082



Visit Our Website  
[www.wakeindustrial.com](http://www.wakeindustrial.com)



Email Us  
[sales@wakeindustrial.com](mailto:sales@wakeindustrial.com)

*All Products from Wake Industrial, LLC, come with:*

### Sales and Repairs

We specialize in providing immediate product delivery when your system goes down. We have thousands of In-Stock automation products and offer a full range of repair options.

### Fast Shipping

We ship worldwide, offering any type of shipping method with all the major logistic companies such as FedEx, UPS, DHL, USPS, and a variety of freight carriers.

### Quality Guarantee

With standards like our 1 year warranty on ALL products, we can guarantee a better customer service experience than any other company within our industry.

### Damage Free Delivery



All of our products are cleaned, go through quality control and are shipped using a custom military grade foam to ensure your product arrives undamaged. We have the capability to ship both small 1lb products and large 200lb+ automation parts regardless of your location.

---

### Stay In Touch

Wake Industrial, LLC  
1620 Old Apex Road  
Cary, NC 27513

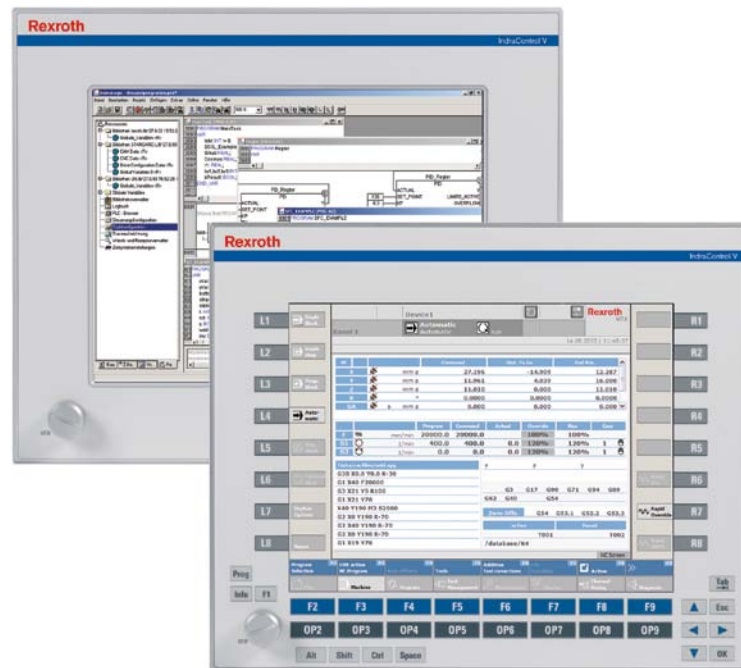
*Wake Industrial is not affiliated with nor an authorized distributor or representative of any manufacturers, brands or products listed.*

**Call:** 1-888-551-3082  
**International:** 1-919-443-0207  
**Fax:** 1-919-267-1705

**Email:** [sales@wakeindustrial.com](mailto:sales@wakeindustrial.com)  
**Website:** [www.wakeindustrial.com](http://www.wakeindustrial.com)

Embedded PC

# 12.1" embedded panel PC IndraControl VEP 40



Embedded PC

**12.1" embedded panel PC ■ IndraControl VEP 40**

Documentation



## Technical data

	VEP 40.5 DB	VEP 40.5 EI
<b>Processor</b>		
CPU	Atom 1.66 GHz	
Operating system	Windows XPe / Windows 7	
<b>Memory</b>		
Use / application	2 GB	
Flash size	4 GB / 8 GB	
Compact flash	2	
	CF socket	
<b>Display</b>		
Type	TFT	
Size	30.7 cm (12.1")	
Colors/gray scales	256.000	
	Colors	
Resolution	800 x 600	
<b>Operation</b>		
Type	Touch screen	Touch screen and operator keys
	Via virtual keyboard	
Function keys	0	16
Machine keys	0	16
Additional keys	0	14
<b>Interfaces</b>		
Ethernet	2 x Ethernet TCP/IP	
USB	3 x USB (1x front)	
Seriell	RS232	
<b>Electrical data</b>		
Supply voltage U	24 V DC	
U <sub>min</sub> ... U <sub>max</sub>	19 V DC ... 30 V DC	
Power consumption	36 W	
<b>Protection</b>		

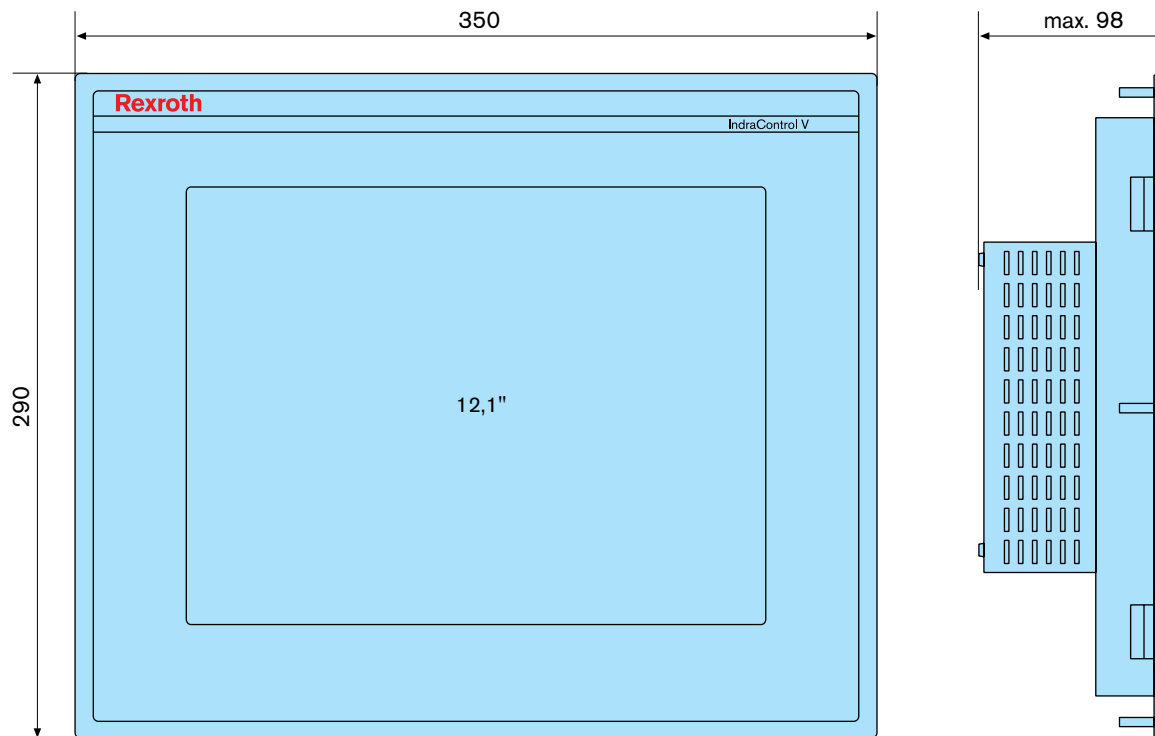
Embedded PC

**12.1" embedded panel PC ■ IndraControl VEP 40**

Overall protection category	IP20	
Category at front	IP65	
<b>Ambient conditions</b>		
Permissible temperature (operation)	+5 °C ... +45 °C	
Permissible relative humidity (operation)	5% ... 85%, EN 61131-2	
<b>Weight</b>		
Weight	3,8 kg	3,9 kg

**Dimensions**

		VEP 40.5 DB	VEP 40.5 EI
<b>Dimensions</b>			
Height H	[mm]	290	290
Width B	[mm]	350	350
Depth T	[mm]	60	51
Screen size X	[mm / "]	307 / 12,1	307 / 12,1

**Order details**

Embedded PC

**12.1" embedded panel PC ■ IndraControl VEP 40**

Type code	Description	Material number:
VEP40.5DBN-2G02E-A3D-NNN-NN-FW	IndraControl VEP 40, touch front, visualization, 2 x Ethernet	R911173050
VEP40.5DBN-2G0NE-A3D-NNN-NN-FW	IndraControl VEP 40, touch front, visualization, 1 x Ethernet	R911173150
VEP40.5EIN-2G02E-A3D-NNN-NN-FW	IndraControl VEP 40, combi front, visualization for MTX/XLC	R911172936

**Firmware**

Type code	Description	Material number:
FWA-VEP*05-XPE-01VRS-D0-A*	Firmware for IndraControl VEPxx.5-Atom N455 (Windows XPe)	R911337390
FWA-VEP*05-W7*-01VRS-D0-A*32	Firmware for IndraControl VEPxx.5-Atom N455 (Windows 7)	R911337389

**Documentation**

Type code	Description	Material number:
DOK-SUPPL*-VEP*XX.5***-ITRS-DE-P	IndraControl VEPxx.5 operating instructions (DE)	R911337774
DOK-SUPPL*-VEP*XX.5***-ITRS-EN-P	IndraControl VEPxx.5 operating instructions (EN)	R911337775

**Accessories****Auxiliary components**

Description		
HMI/industrial PC	Accessories	IndraControl VAC, VAP, VAU

**Bosch Rexroth AG**

Postfach 13 57  
97803 Lohr, Germany  
Bgm.-Dr.-Nebel-Str. 2  
97816 Lohr, Germany  
Tel. +49 9352 18-0  
Fax +49 9352 18-8400  
[www.boschrexroth.com/electrics](http://www.boschrexroth.com/electrics)

**Local contact information can be found at:**

[www.boschrexroth.com/adressen](http://www.boschrexroth.com/adressen)

The data specified above only serve to describe the product. As our products are constantly being further developed, no statements concerning a certain condition or suitability for a certain application can be derived from our information. The information given does not release the user from the obligation of own judgment and verification.

It must be remembered that our products are subject to a natural process of wear and aging.